

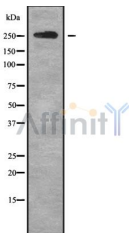
ABCA4 Ab

Cat.#: DF9852
Size: 100ul,200ul

Concn.: 1mg/ml
Source: Rabbit

Mol.Wt.: 256 kDa
Clonality: Polyclonal

Application:	WB 1:1000-3000
Reactivity:	Human,Mouse
Purification:	The antiserum was purified by peptide affinity chromatography using SulfoLink™ Coupling Resin (Thermo Fisher Scientific).
Specificity:	ABCA4 Ab detects endogenous levels of total ABCA4.
Immunogen:	A synthesized peptide derived from human ABCA4.
Uniprot:	P78363
Subcellular Location:	Membrane. Localized to outer segment disk edges of rods and cones, with around one million copies/photoreceptor.
Tissue Specificity:	Retinal-specific. Seems to be exclusively found in the rims of rod photoreceptor cells.
Similarity:	Belongs to the ABC transporter superfamily. ABCA family.
Storage Condition and Buffer:	Rabbit IgG in phosphate buffered saline , pH 7.4, 150mM NaCl, 0.02% sodium azide and 50% glycerol.Store at -20 °C.Stable for 12 months from date of receipt.



Western blot analysis of ABCA4 using HT29 whole cell lysates

IMPORTANT: For western blot, incubate membrane with diluted primary Ab in 5% w/v milk , 1X TBS, 0.1% Tween@20 at 4°C with gentle shaking, overnight.

For Research Use Only. Not for use in diagnostic and therapeutic procedures. Not for resale without express authorization.